

HULL TRUCK THEATRE IN ASSOCIATION  
WITH LEEDS PLAYHOUSE PRESENT

**50**  
**YEARS**  
1972-2022



# A CHRISTMAS CAROL

*"glorious"*



YORKSHIRE POST

PROUDLY SPONSORED BY



RECOMMENDED  
AGE 5+

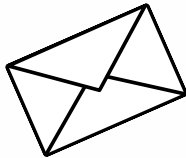
# Activity Pack



# A Christmas Carol Craft Activities

## Colour in Cards

1. Print or photocopy our bespoke Hull-themed post cards.
2. Have fun colouring, painting or decorating them, or if you're feeling creative, design your own from scratch!
3. Write a message on the back to brighten someone's day...



## Send to a Stranger

Bring your post cards along to Hull Truck Theatre and you can post them at Box Office. We will distribute them to groups that might not receive much Christmas post this year, for example care home residents and new arrivals to Hull.

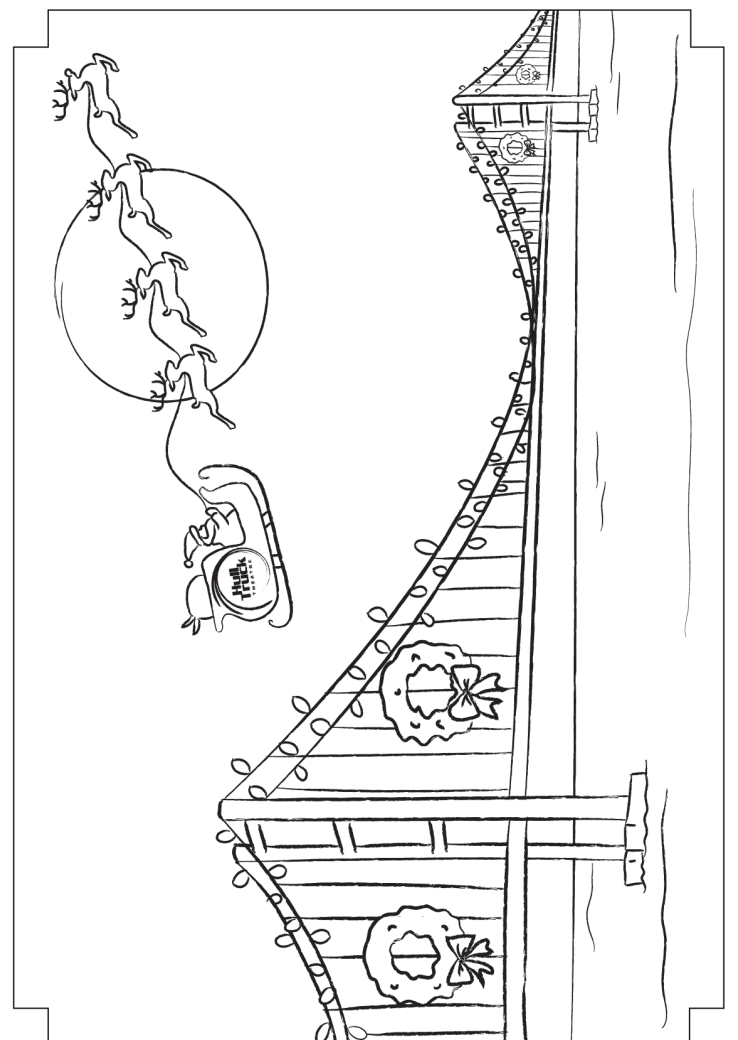
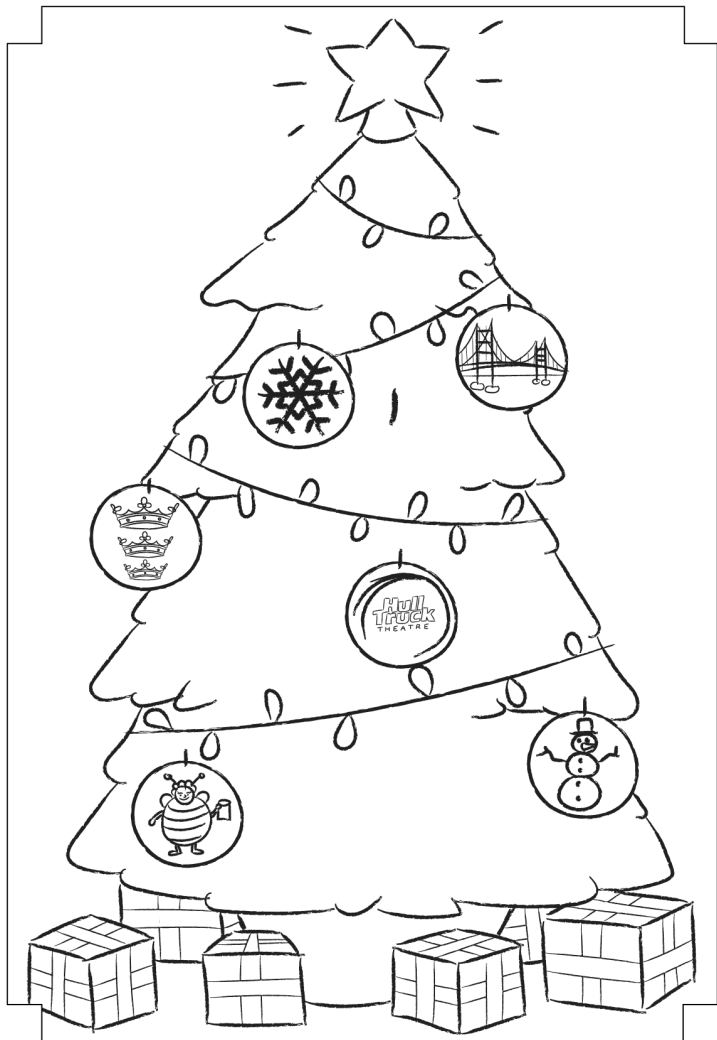
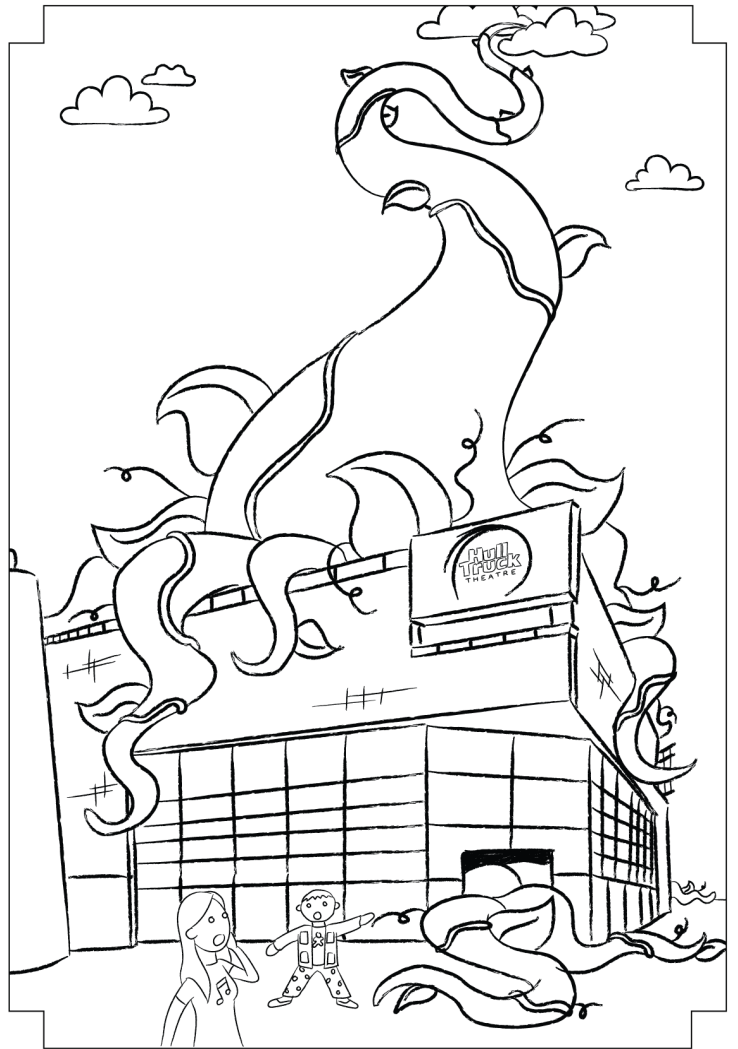
## Printable Puzzles

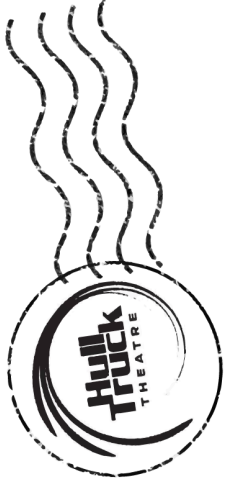
Print out some of our other activities – complete a word search, spot the difference, make a gift box and more...



## Donation Point

This festive period, Hull Truck Theatre will be one of FareShare's food donation points and will collect basic toiletries for Open Doors. Audience members are welcome to donate non-perishable food items, shower gels, deodorants and period products for vulnerable people in Hull. Bring them along if you can!

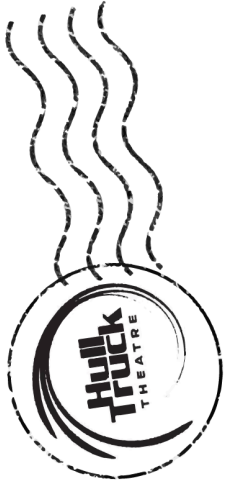




Artwork by  
**A B C**  
Alex Bennett Design



Artwork by  
**A B C**  
Alex Bennett Design



Artwork by  
**A B C**  
Alex Bennett Design



Artwork by  
**A B C**  
Alex Bennett Design

A Christmas Carol

# Word Search



X	G	S	C	C	S	K	C	T	N
C	R	S	H	H	E	R	W	I	K
A	J	E	A	R	G	P	L	H	Q
R	X	N	R	I	O	B	P	C	S
O	Z	D	I	S	O	F	I	T	G
L	E	N	T	T	R	X	V	A	X
G	I	I	Y	M	C	K	L	R	G
X	Y	K	E	A	S	X	X	C	P
T	O	I	M	S	Z	T	I	M	A
A	Y	E	B	E	N	E	Z	E	R

## Word Bank

Tim

Ebenezer

Charity

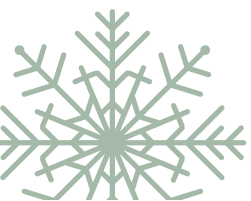
Christmas

Kindness

Cratchit

Carol

Scrooge





# A Christmas Carol

# Word Search

A S O K S D R E Z E N E B E S J M M L U  
 O X H Y W Y L I M A F G K F I M J R U R  
 T X U H N K J M Z L V Y Q O E P Z M B N  
 K C W L P F M A G I C A L X X W R Z L F  
 F G V S A M T S I R H C H U T I M L Y Q  
 U A T V B F D I C K E N S S K B U A J S  
 E P N V E K K D U X P P X O P H J K Y Z  
 S X E O V X E M Y C Y R M W T I S M W U  
 T S S V S I K J S C L R O D N B R R X Z  
 H F E N G A S C C Y T I R A H C N I X A  
 A N R N J O B A R S S E F U T U R E T W  
 R Q P G D G T R O D Y A S V F P E U R S  
 D C A K O N U O O H U T B E H A A K J W  
 S R A M C A I L G S R N O O J S O T X W  
 H A N I L U E K E M J M Q T O T A Z Q L  
 I T Y H P H R L N E B K D C D G E V Y Q  
 P C D N A P D T D Y A R W D U S A E P Q  
 J H L N I P F L C F E S T I V E M A H E  
 N I F E B T P I C Q M P W D M F F U Q H  
 D T R Y J V M B L F M Q E S X X P C S F

## Word Bank

Magical  
 Hull  
 Family  
 Dickens  
 Present

Spirits  
 Truck  
 Christmas  
 Future  
 Hardship

Carol  
 Festive  
 Tim  
 Cratchit  
 Ebenezer

Tiny  
 Charity  
 Past  
 Scrooge  
 Kindness



# BSL and Hull Truck Theatre's A Christmas Carol

One of the key aspirations of this year's production is to increase engagement with the Deaf community through more British Sign Language (BSL) performances. Adam Bassett, who plays Bob Cratchit, is Deaf and is a British Sign Language (BSL) user. Emma Prendergast, who plays Mrs Cratchit, is deaf and uses spoken word and BSL to communicate.

You will see Adam, Emma and other members of the cast using signs, gestures and visual vernacular during the shows, to communicate.

Visual Vernacular is a physical theatre technique, with some poetry and mime, primarily performed by Deaf artists. This powerful story telling style combines strong movement, iconic BSL signs, with gestures and facial expressions, to capture the world in all its visual complexity

## BSL Activity

Using [www.british-sign.co.uk](http://www.british-sign.co.uk), encourage your class to do some research into BSL and how people communicate using BSL.

Ask them to find the signs for:

- Hello
- Please and thank you
- How are you?
- Merry Christmas
- Applause (for the end of the show!)

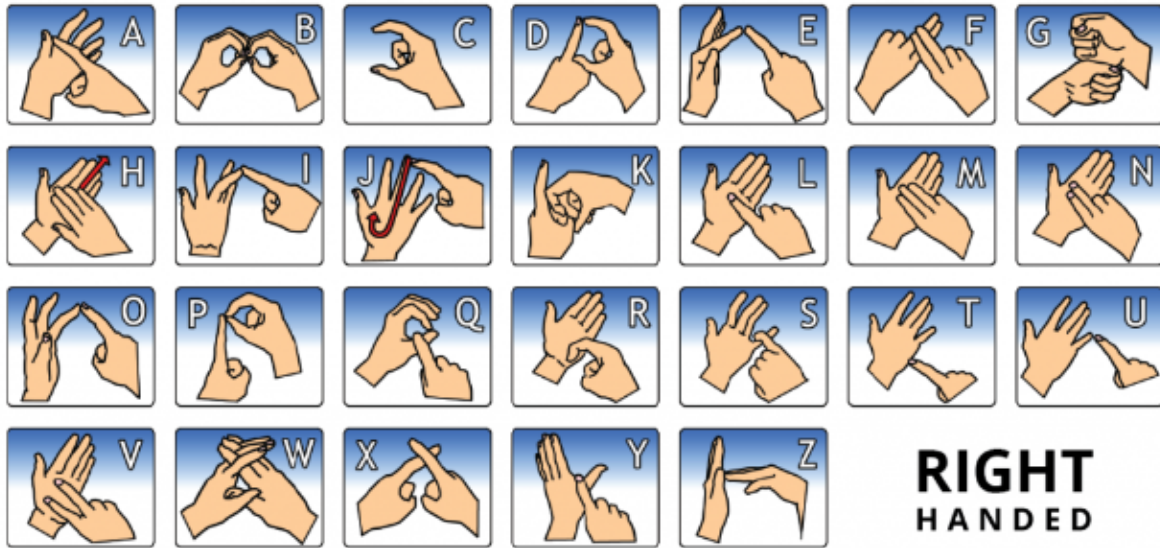
Did you know BSL has different accents/ dialects based on where you learn it, so people will sign with a Hull or Yorkshire accent!

# A Christmas Carol

# BSL Alphabet

Use the fingerspelling alphabet below to help you complete the BSL wordsearch on the next page!

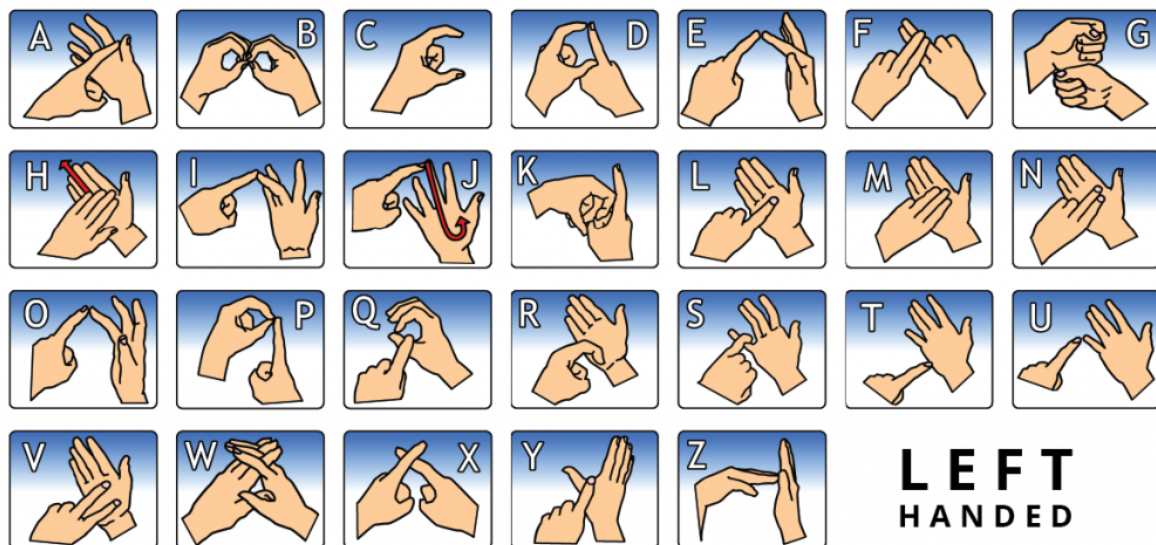
## BRITISH SIGN LANGUAGE - FINGERSPELLING



[british-sign.co.uk](http://www.british-sign.co.uk)

LEARN BRITISH SIGN LANGUAGE ONLINE  
AT [WWW.BRITISH-SIGN.CO.UK](http://WWW.BRITISH-SIGN.CO.UK)

## BRITISH SIGN LANGUAGE - FINGERSPELLING



[british-sign.co.uk](http://www.british-sign.co.uk)

LEARN BRITISH SIGN LANGUAGE ONLINE  
AT [WWW.BRITISH-SIGN.CO.UK](http://WWW.BRITISH-SIGN.CO.UK)





# A Christmas Carol

# Word Search

A CHRISTMAS CAROL WORD SEARCH

BSL Fingerspelling



## WORDS

-- SCROOGE -- KINDNESS -- CHRISTMAS -- THEATRE -- HULL --

Create your own BSL fingerspelling word search puzzles online at [www.signlanguageforum.com/bsl/](http://www.signlanguageforum.com/bsl/)



Created at [www.signlanguageforum.com/bsl/](http://www.signlanguageforum.com/bsl/)



A Christmas Carol

# Word Scramble

Can you unscramble these words?

1. CSMIR TSAH CROAL

-----

2. OCEROGS

-----

3. YNIT ITM

-----

4. CIHYART

-----

5. DKNNISES

-----

6. MLAICGA

-----

7. LVOE

-----

8. STPISRI

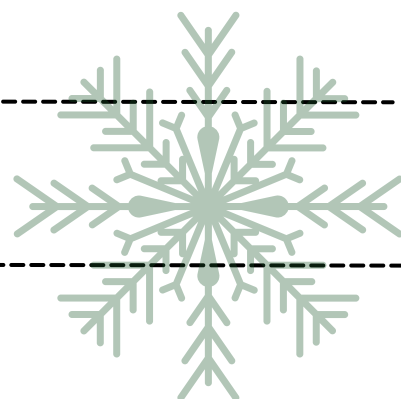
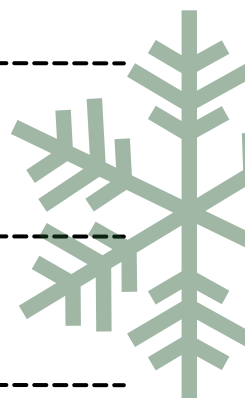
-----

9. LFMIA Y

-----

10. DNISCEK

-----



Answers: 1. Christmas Carol 2. Scrooge 3. Tiny Tim 4. Charity 5. Kindness 6. Magical 7. Love 8. Spirits 9. Family 10. Dickens



A Christmas Carol

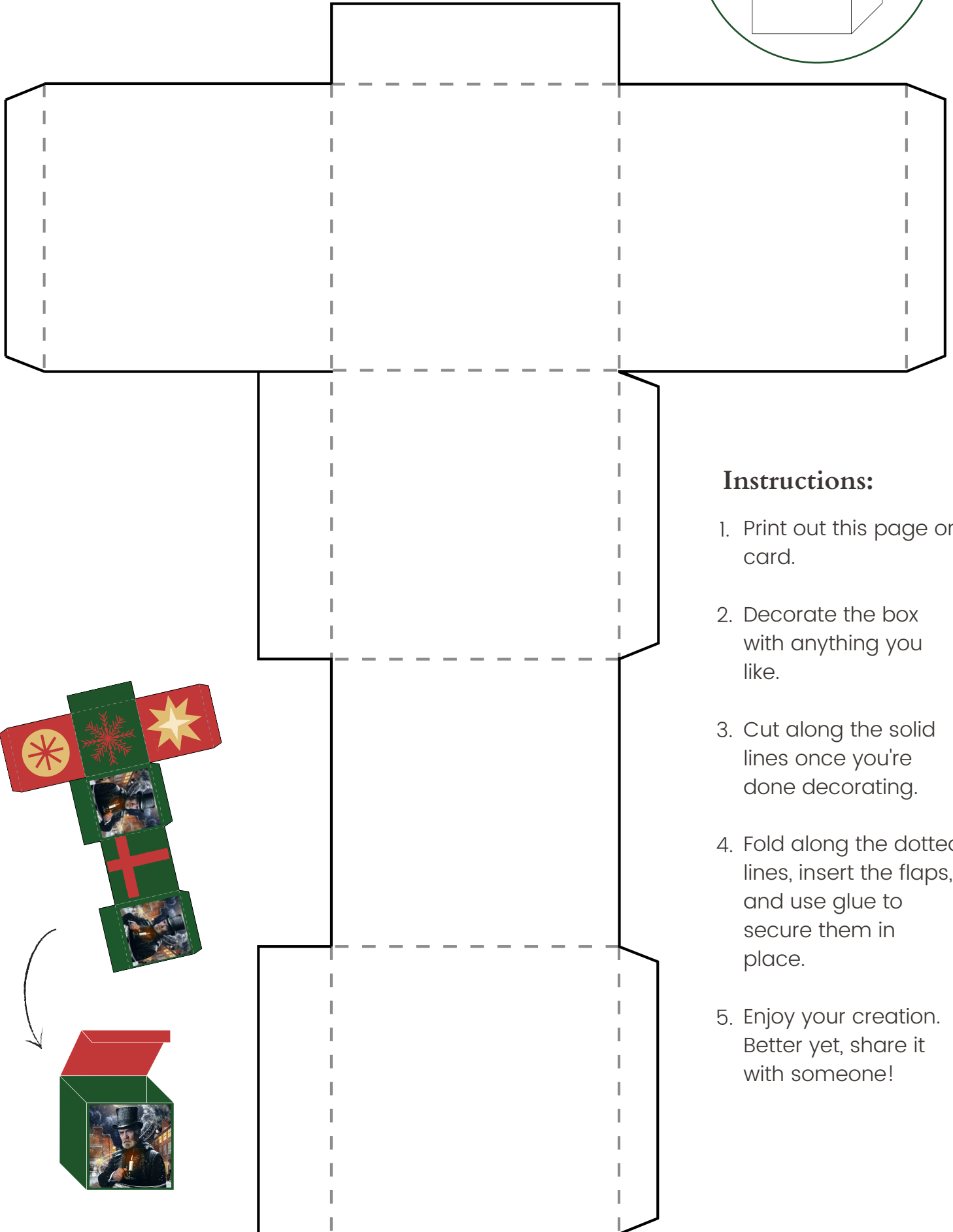
# Spot the Difference



CAN YOU  
SPOT THE  
FIVE  
DIFFERENCES?

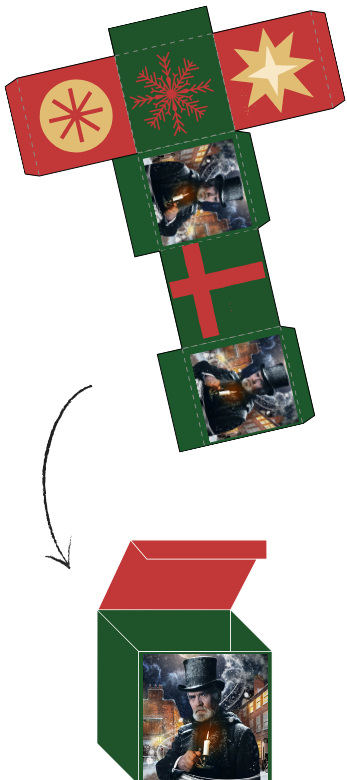


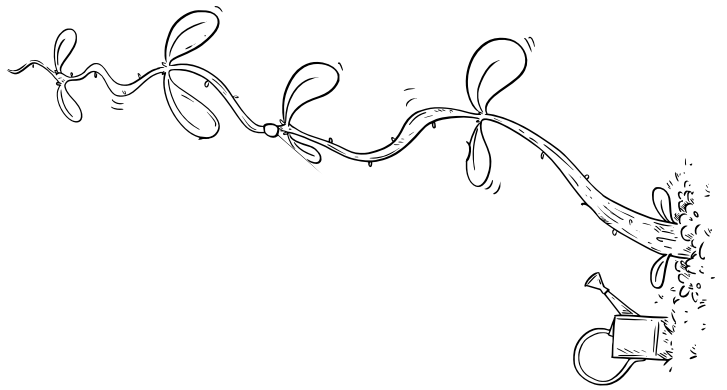
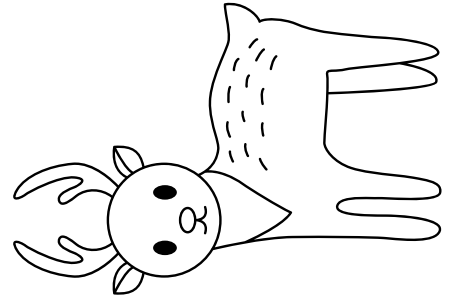
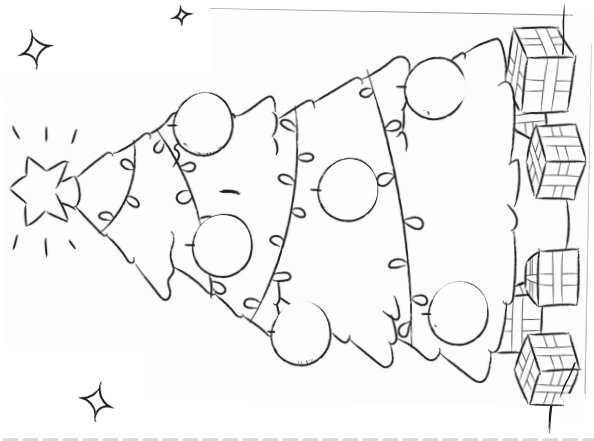
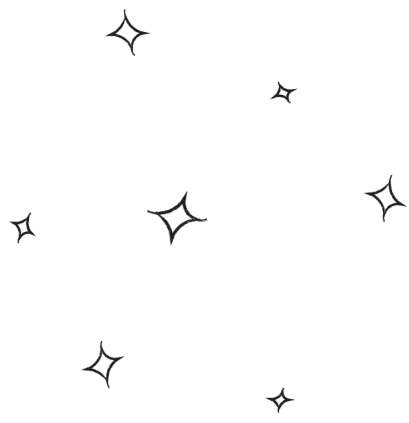
# Gift Box



## Instructions:

1. Print out this page on card.
2. Decorate the box with anything you like.
3. Cut along the solid lines once you're done decorating.
4. Fold along the dotted lines, insert the flaps, and use glue to secure them in place.
5. Enjoy your creation. Better yet, share it with someone!





MERRY  
CHRISTMAS



## Checklist:

- Receive Activity Pack from Elisha & Josie.
- Have fun designing bookmarks, solving puzzles and decorating post cards.
- If you haven't got your tickets yet, phone Michael to book on 01482 323638.
- Bring your post cards to Hull Truck Theatre so we can distribute them.
- Come and watch A Christmas Carol..



To access an electronic PDF version of this pack go to:

<https://bit.ly/3NnxKV5>

This activity pack was created as part of Hull Truck Theatre's Community Dialogues program for the production of A Christmas Carol.

Hull Truck Theatre is supported by



Supported using public funding by  
**ARTS COUNCIL  
ENGLAND**



**Hull**  
City Council



Proud to support



For more information about Community Dialogues visit [www.hulltruck.co.uk](http://www.hulltruck.co.uk) or contact Elisha on [elisha.holt@hulltruck.co.uk](mailto:elisha.holt@hulltruck.co.uk).