

Hull Truck Theatre, Octagon Theatre Bolton,  
and Derby Theatre present



# Macbeth

Written by William Shakespeare. Directed by Mark Babych.

## Show Experience Guide

This show experience guide is designed for anyone who may want to familiarise themselves with the show *Macbeth* before their visit.

The guide includes a social story, images of the cast, and information about light/sound effects and show content.

We also have a venue experience guide which includes photos and information about the theatre itself and what to expect when you arrive and during your visit.

[CLICK HERE TO VIEW OUR VENUE EXPERIENCE GUIDE.](#)

**Show Running Time:** Approx. 2 hours 30 mins (including a break)

Act I - 75 mins | Break - 20 mins | Act II - 50 mins

**Recommended Age:** 13+

## Guide Content

- Important Content Guidance
- Social Story
- The stage and set
- Cast and characters
- The story
- Effects and content guidance timings
- Relaxed performances and pre-show visit
- Sensory items

# Important Content Guidance

## Throughout the show you can expect:

- Actors dressed in military wear
- Some loud music in between scenes
- Strobe lighting [\*]
- Water based haze to replicate smoke
- Loud electricity/static/buzzing sounds [\*]
- High pitched white noise [\*]
- Sounds of war (bombs dropping, explosions and gun fire)
- Loud buzzer/alarm sounds accompanied by pulsing red lights [\*]
- Fake stage blood [\*]
- Fake stage weaponry (knives, swords, handguns, machine guns)
- References and depictions of violence towards adults and children (including fist fighting, fighting with weapons, physical violence – punching, grabbing etc) [\*]
- Actors entering or exiting via the ground floor and first floor theatre entrances [\*]
- References and depictions of death, dead bodies, murder and injury (some visible and some off stage) [\*]
- Raised and aggressive voices during a number of scenes
- References and depictions of witchcraft [\*]
- References and depictions of mental illness and hallucinations [\*]

## Deaths [\*]

1. Thane of Cawdor / Soldier is executed by firing squad/machine guns. This murder is visible behind a broken/frosted window on the upper level of the stage.
2. King Duncan and his guards are murdered by Macbeth. They are killed using knives. These murders are not seen by the audience.
3. Banquo is murdered by an assassin, sent by Macbeth. The assassin cuts Banquo's throat with a knife. This murder is visible on stage. Banquo's child escapes.
4. The second assassin is killed by the first, after letting Banquo's child escape. His throat is cut. This murder is visible and happens very quickly.
5. Lady Macduff's young child and baby are shot, and killed, by an assassin. The assassin is seen shooting off stage. The child and baby are off stage and are not seen by the audience.
6. Lady Macduff is shot and killed by a second assassin. The audience do not see this murder, only the sound of gun fire is heard.
7. Lady Macbeth dies. This happens off stage and we do not see or hear how this happens.
8. Ross is killed, with a knife, by Macbeth. This happens on stage, in front of the audience.
9. Macbeth is killed in a sword fight with Macduff. This happens on stage, in front of the audience.

# Social Story

Many people enjoy seeing stories told by actors at the theatre. This is often called a production. The production of *Macbeth* tells the story of a soldier, returning from battle, who is desperate to become King, and will do anything to make it happen.

This production was written by William Shakespeare, over 400 years ago, so some of the words used may sound different or unusual. Even if you can't follow exactly what the characters are saying, you can follow the story through their actions on stage.

To make the production more interesting the stage production team use items called props. These include fake weapons such as guns and knives, stools, cutlery, tableware and dolls. They are there to help to create an interesting stage set. The actors also use fake blood to pretend they are injured.

The actors often enter and exit from the back of the stage. These exits lead to the backstage area where actors can get changed. The stage and these areas are only for the actors to use.

Sometimes the actors may enter and exit from other doors in the theatre, including the doors at the back of the theatre. They may pass by you closely but will not touch you.

Special effects are also used to create an interesting production. These may include music, sound effects, changing lights and smoke effects.

Many people enjoy these effects. Some people like to bring their ear defenders, sunglasses or a favourite smell sprayed on a tissue, to help them manage these moments and enjoy the production more.

The production team like to sometimes include words or phrases that are not true or may seem unkind to one of the other actors. This is to help tell the story and is not real. The actors are pretending.

The people watching the production are called the audience. At the end of the show, the audience will clap to show that they enjoyed the production.

Many people enjoy the production of *Macbeth*.  
We hope you do too!

# The Production of Macbeth

## The stage and set

When you enter the theatre you will see the stage and set. The actors will come out on to the stage to perform. All the items of scenery, furniture and the objects on the stage are called the set.

The set looks like the inside of a warehouse or factory, with concrete walls and floor. Around the edge of the floor there are metal grates and lights shine through these at different points in the show.

There are large rusted metal supports and stairs at the back of the stage which lead up to another level.

On the ground level, at the back of the stage, there is a large doorway covered with a plastic curtain and two smaller, open doorways at either side.

On the first level there is a room with a doorway and metal door. There is a large window into the room, on the right. The window is broken in places and we can see into the room.





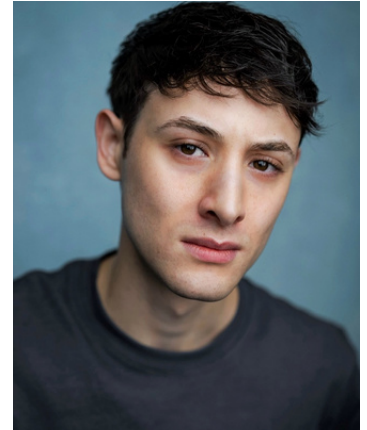
# The Cast



This is Oliver Alvin-Wilson who plays Macbeth.



This is Cayvan Coates who plays Malcom



This is Livie Dalee who plays Donalbain & Witch



This is Colin Hurley who plays Duncan & Porter



This is Josie Morley who plays Lady Macduff & Witch



This is Jo Mousley who plays Lady Macbeth



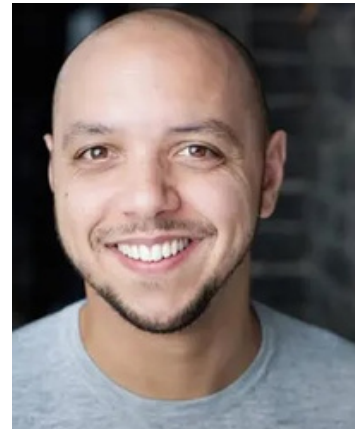
This is Daniel Poyser who plays Banquo



This is Deborah Pugh who plays First Witch  
and Seytan (The Macbeth's housekeeper)



This is Simon Tringer who plays Macduff



This is Benjamin Wilson who plays Ross



A company of young actors play the children in *Macbeth*, including Fleance and Macduff's son.

# Key Characters

## Macbeth

Macbeth is a brave and honourable military general. His fate takes a drastic turn when he meets three witches who predict that he will become King.



## Lady Macbeth

Lady Macbeth is Macbeth's wife, she is ruthless and ambitious.



## The Three Witches

Also called 'wierd sisters', they plot mischief against Macbeth using charms, spells, and prophecies.



## Banquo

Banquo is a noble general and Macbeth's best friend.





## Malcom

Malcom is Duncan's son and rightful heir to the throne.

## Duncan

Duncan is the good and virtuous King.



## Macduff

Macduff is a noble fighting on Duncan's side. He does not trust Macbeth.

## Lady Macduff

Lady Macduff is the loving wife of Macduff.



## Ross

A nobleman and messenger of the royal court.

# The Story

Macbeth and Banquo, two of King Duncan's military generals, meet three masked women - these are the three witches, also known as the Weird Sisters. The Witches predict that Macbeth will be given the title of Thane of Cawdor, which is a rank of nobility, and later become the King. They also tell the men that future kings will come from Banquo's family. The Witches disappear before the men can ask for more information.



Later, Ross announces that King Duncan has named Macbeth Thane of Cawdor to honour him for his success in battle. The King plans to visit Macbeth's home that night.

Lady Macbeth learns about the Witches' prediction, and her husband's new title. She wants him to become King, and swears that she will help him by whatever means are necessary, including murder.

Macbeth returns home and is joined by King Duncan. Lady Macbeth persuades her husband to act, and they come up with a plan to kill Duncan and blame the guards, in order to help Macbeth become King himself.





They wait until everyone is asleep before acting. Macbeth is filled with doubt and sees a vision of a bloody dagger, but still stabs and kills Duncan and his guards. Lady Macbeth leaves bloody daggers by the dead King's body to make it look like the guards are guilty of murder. Another nobleman, Macduff, discovers that the King has been murdered. Malcolm and Donalbain, the King Duncan's sons, scared that they might be killed next, run away.



Macbeth becomes the King, but realises that this means that the Witches' prediction has become true, and they also said that future kings would be part of Banquo's family. Macbeth feels insecure and worried, fearing that Banquo's son Fleance will take the crown from him.

Macbeth sends some men to kill Banquo and Fleance. They kill Banquo, but Fleance escapes. Later that night Macbeth sees Banquo's ghost and reacts strangely in front of his guests, who become worried. Lady Macbeth tries to calm him.



Macbeth meets with the Witches again, who make more predictions. They tell him he will be safe until a woodland named Birnam Wood comes to him in battle. They warn him to beware of Macduff, and that no one can hurt him who is “of woman born”. They also predict that future kings will still come from Banquo’s family.

Macbeth feels safer because all men are born from women and woods can’t move, but takes action to remove Macduff as a threat. He becomes more and more violent, and orders the deaths of Macduff’s family.



Macduff, who is now with Malcolm, one of King Duncan’s sons, is heart-broken with grief. He persuades Malcom to lead an army against Macbeth.

Elsewhere, Lady Macbeth begins sleepwalking and distressing over seeing blood on her hands. Macbeth waits for Malcolm’s army, thinking himself safe, when he receives the news that Lady Macbeth is dead, which leaves him feeling hopeless.





Macbeth is shocked to learn that the army has cut down trees from Birnam Wood and used them to camouflage themselves, proving another part of the Witches' predictions true.

Macduff then reveals to Macbeth that he was born by caesarean section, meaning he was not "of woman born". Macbeth realises this means Macduff can kill him, and they fight until he does. The successful Malcom is declared king.



# Lighting, sound effects and other content

<b><u>Effect / Content</u></b>	<b><u>Approx. Timing</u> <u>Act 1</u></b>
SOUND: Bomb dropping, a loud explosion and then white noise. The Witches come out on stage.	Immediately as the lights go down when the show is about to start.
SOUND: Loud electricity buzzing/static sound	Approx 40 secs into Act 1
SOUND: Loud buzzer The soldier on the gurney rises up on the bed with a gasp	Approx 1 min 15 into Act 1
SOUND: A loud explosion	Approx 2 min 50 and 3 min 25 into Act 1
The soldier on the gurney has a heart attack, collapses on the gurney and is wheeled off stage	Approx 3 min 40 into Act 1
SOUND: White noise throughout the scene with the Witches. There is also frequent loud growling sounds, drums and the sound effect of things catching fire	Starting approx 4 min 50 into Act 1 and lasting approx 4 min 20 secs
One of the Witches pulls a fake limb (a hand) from her bag and snaps off a finger	Approx 5 min 55 into Act 1
SOUND: Loud electricity buzzing/static sound. The Witches disappear off stage	Approx 9 min 10 into Act 1

<b><u>Effect / Content</u></b>	<b><u>Approx. Timing Act 1 Continued</u></b>
<p>DEATH: The Thane of Cawdor is killed with a machine gun, in the room on the upper level of the stage. We hear machine gun fire.</p> <p>There are a few seconds of <u>strobe lighting</u> here, as the machine gun fires.</p>	Approx 17 mins 30 into Act 1
Three soldiers, with guns enter the theatre via the ground floor entrance	Approx 18 mins 15 into Act 1
SOUND: Loud music and cheering as the soldiers come on to the stage to celebrate Macbeth becoming Thane of Cawdor. Loud whistles and cheering as Lady Macbeth enters down the metal staircase.	Approx 22 mins 50 into Act 1 and lasts approx 1 min 20
Macbeth hallucinates and sees an 'invisible' dagger. He takes out his knife and swings it around on stage	Approx 33 mins 35 into Act 1
<p>DEATH: Macbeth has killed Duncan and his guards off stage. We do not see this happen. Macbeth returns to the stage holding two bloody knives, his vest and arms covered in blood</p> <p>Lady Macbeth takes the knives from Macbeth. She now has bloody hands and exits the stage.</p>	<p>Approx 35 mins 50 into Act 1</p> <p>Approx 38 mins 10 into Act 1</p>
<p>SOUND: Scene with the Porter - throughout this scene there is regular sounds of someone knocking at the door and flickering lights at the back of the stage</p> <p>The music and voices get louder as one of the Witches appears on the upper level of the stage.</p> <p>Loud electricity buzzing/static sound</p>	<p>Approx 30 mins 20 into Act 1</p> <p>Approx 41 mins 30 into Act 1</p> <p>Approx 41 mins 50 into Act 1</p>



<b><u>Effect / Content</u></b>	<b><u>Approx. Timing</u></b> <b><u>Act 1 Continued</u></b>
SOUND: Loud buzzer/alarm sounds, warning light pulses red, as it is announced that Duncan has been murdered	Approx 43 mins 30 into Act 1
DEATH: Two assassins enter on the upper level of the stage and hide. They wait for Banquo and his son to pass by. Banquo and one assassin fight with knives while the other assassin grabs the child. Banquo's throat is cut and he is pushed into the room on the upper level. The child escapes, the second assassin chases after him.  DEATH: The second assassin returns without the child. The first assassin is mad and cuts his throat.	Approx 64 mins into Act 1  Approx 66 mins into Act 1
Banquo's ghost suddenly appears at the dinner table. His shirt is covered in blood. Macbeth descends into madness, shouting and acting strangely. Banquo's ghost leaves.	Approx 68 mins into Act 1
Banquo's ghost bursts through the curtain at the back of the stage as Macbeth continues to shout and act strangely.  SOUND: White noise	Approx 70 mins into Act 1
Macbeth and Lady Macbeth raise their voices. Macbeth leaves the stage. Lady Macbeth screams loudly and throws items from the table onto the floor	Approx 74 mins into Act 1
<b>END OF ACT 1   Approx 75 mins</b>	

<b><u>Effect / Content</u></b>	<b><u>Approx. Timing</u></b> <b><u>Act 2</u></b>
SOUND: Sudden sharp, piercing sound and white noise as the Witches enter on stage	Immediately as Act 2 starts
<p>SOUND: Throughout the scene with the Witches there are frequent loud noises and jarring sounds such as growling, screeching, white noise, electricity/buzzing, sound effect of things catching fire.</p> <p>The scene starts at the beginning of Act 2 and lasts approx 8 mins</p>	
<p>Also in this scene...</p> <p>The Witches each drink blood from a tube</p> <p>The Witches all carry a doll. One of the Witches pulls the head off their doll</p> <p>SOUND: Loud thunder/rumbling sound</p> <p>Banquo's ghost appears in the room on the upper level of the stage. He makes his way out on to the balcony</p> <p>SOUND: Loud electricity buzzing/static sound as the Witches and Banquo disappear. The scene ends.</p>	<p>Approx 4 mins into Act 2</p> <p>Approx 4 mins 45 into Act 2</p> <p>Approx 5 mins 50 into Act 2</p> <p>Approx 7 mins 30 into Act 2</p> <p>Approx 8 mins 10 into Act 2</p>
<p>DEATH: Two assassins appear on stage. One grabs Lady Macduff and the other grabs her child and baby. The child and baby are pushed out of the door at the back of the stage and out of sight. We see the assassin shooting a hand gun off stage but do not see the child and baby.</p> <p>DEATH: A second assassin grabs Lady Macduff. There is a scuffle and some physical violence (punching, slapping, hair grabbing). Lady Macduff is pushed through the curtain at the back of the stage, the assassin follows and we hear gun shots. We do not see these deaths on stage</p>	<p>Approx 15 mins into Act 2 and lasts approx 1 min</p>

<b><u>Effect / Content</u></b>	<b><u>Approx. Timing Act 2 Continued</u></b>
Ross enters on to the stage from the ground floor theatre entrance	Approx 22 mins 20 into Act 2
Lady Macbeth comes onto the stage. She is sleep-walking and sleep-talking about death and murder. Her mental health is declining	Approx 27 mins 50 into Act 2 and lasts approx 3 mins
Ross enters on to the stage from the ground floor theatre entrance and later exits the same way	Entrance approx 31 mins 35 into Act 2 and exit approx 1 min later
Four soldiers carrying machine guns enter the theatre from the door at the back/top of the theatre space and walk down the stairs to the stage. They then exit via the door on the ground floor of the theatre.	Entrance approx 35 mins 50 into Act 2 and exit approx 2 mins 20 later
DEATH: It is announced that Lady Macbeth is dead. We do not see or hear how she died	Approx 38 mins into Act 2
SOUND: Loud buzzer/alarm sound and red warning light pulses	Approx 40 mins 40 into Act 2
Four soldiers enter on to stage from the ground floor entrance	Approx 41 mins into Act 2
SOUND: Lots of gunfire. Macbeth falls on to stage through the door at the back of the stage	Approx 41 mins 20 into Act 2
Ross enters on to the stage from the ground floor theatre entrance  DEATH: During this scene between Ross and Macbeth there is a struggle with a knife and Ross is killed.	Approx 42 mins into Act 2

<b><u>Effect / Content</u></b>	<b><u>Approx. Timing</u></b> <b><u>Act 2 Continued</u></b>
<p>Lady Macbeth, in a body bag, is wheeled out on to stage, on a gurney. Macbeth and Macduff enter on to stage also</p> <p>DEATH: During this scene between Macbeth and Macduff there is an on stage fight involving a gun and swords. Macbeth is killed, with a sword, by Macduff</p>	<p>Approx 43 mins 30 into Act 2</p> <p>Scene lasts approx 4 mins</p>
<p>SOUND: White noise as the Witches enter on to stage</p>	<p>Approx 49 mins 40 into Act 2</p>
<p>SOUND: A loud, jarring, shattering sound as the performances ends</p>	<p>Approx 50 mins into Act 2</p>
<p><b>END OF ACT 2   Approx 50 mins</b></p>	

# Relaxed Performances

There is a relaxed performance of *Macbeth* on Tuesday 17 February at 7.30pm, and Wednesday 25 February at 10.15am

During the relaxed performance the lights inside the theatre will be a bit brighter than usual. We don't mind if you need to get up, move around a little bit or leave the theatre for a break.

There will be a quiet space on the First Floor should you need it.

There will also be a resource table on the Ground Floor and the cast will come out on to the stage, before the performance starts, to introduce themselves.

If you would like to arrange a pre-show visit to the theatre, to familiarise yourself with the space, please contact [paul.bennett@hulltruck.co.uk](mailto:paul.bennett@hulltruck.co.uk) or call 01482 488208.

## Sensory Items

We have a small number of ear defenders available to loan (suitable for baby, toddler and adult) which can be useful for patrons with auditory sensitivities.

We also have a small number of wobble cushions and weighted lap blankets available for loan, along with a range of sensory toys.

Please feel free to bring with you any items that usually assist in coping with busy or noisy environments.

We hope that you enjoy the show, and your visit to  
Hull Truck Theatre.