

You can follow these instructions to reach the theatre, from St Stephen's Multi-Story Car Park. You do not need to walk through St Stephen's shopping centre to get to Hull Truck Theatre.

### Arriving in the Car Park

You will drive up the car park ramp and reach a barrier.

You do not need a ticket, your registration number will be recorded automatically and the barrier will lift up.

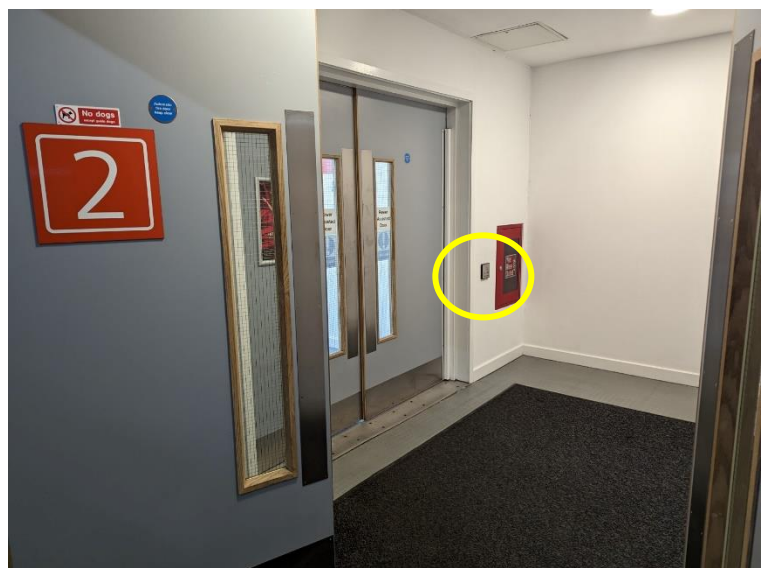
You enter the car park on Level 2.

After you have parked, make your way to the back of the car park. You will see the entrance to the Holiday Inn Express on the right.



Go through the double doors on the left, sign posted 'Albemarle Music Centre, Hull Truck Theatre & Hotel'.

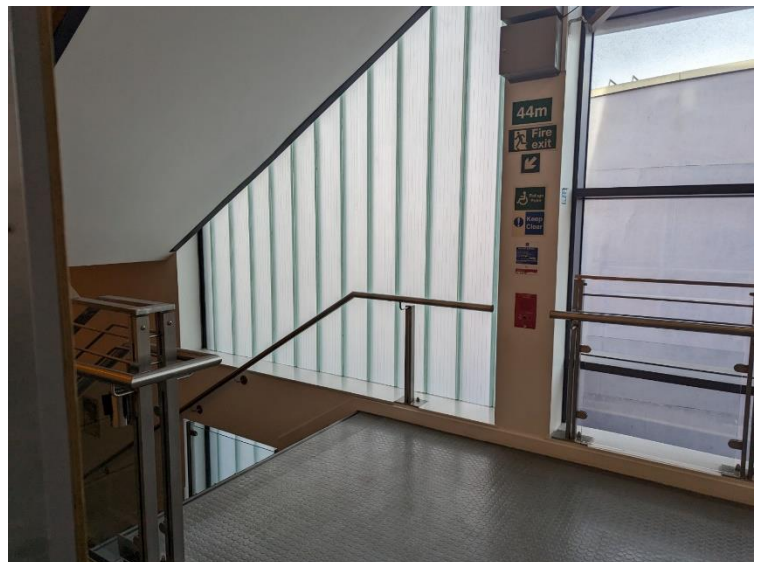
Go through the second set of double doors. You can use the push button to the right of the doors so they open automatically.



You will see a lift, on your right. If you take the lift you should go down to the ground floor.



Or you can take the stairs down to the ground floor instead. There are 60 steps from Level 2 of the car park to the ground floor.



Once you reach the ground floor, by lift or stairs, you will see another set of double doors leading to St Stephen's Square.



You can use the push button on the wall to the right of the lift to make the doors open automatically.

Once outside you will see Hull Truck Theatre across the square.



If the car park is busy, when you arrive, you may need to park on Level 3. You can find the same lift and staircase, at the back of the car park on Level 3, to take you to the ground floor.

### Leaving the Car Park

When you leave the theatre you can go back to the car park in the same way.

When you get back to the car park find a payment machine.

Enter your registration number and the machine will tell you how much to pay.

If you parked after 5.30pm (and leave before 11.59pm) it will just cost £1 (Mon - Sat) or £2 for all day parking on a Sunday.

Pay the fee and then go back to your car.

Drive up to the exit barrier and it will open automatically.