

Hull Truck Theatre presents



To Have and to Hold

Written by Richard Bean | Directed by Terry Johnson

Show Experience Guide

This show experience guide is designed for anyone who may want to familiarise themselves with the show To Have and to Hold before their visit.

The guide includes a social story, images of the cast, and information about light/sound effects and show content.

We also have a venue experience guide which includes photos and information about the theatre itself and what to expect when you arrive and during your visit.

[CLICK HERE TO VIEW OUR VENUE EXPERIENCE GUIDE.](#)

Show Running Time: Approx. 2 hours 25 mins (including a break)

Act I - 1 hour 15 mins | Break - 20 mins | Act II - 50 mins

Recommended Age: 14+

Guide Content

- Social Story
- About the show
- The stage and set
- Cast and characters
- The story
- Light/sound effects and content guidance
- Relaxed performances and pre-show visit
- Sensory items

Social Story

Many people enjoy seeing stories told by actors at the theatre. This is often called a production. The production of *To Have and to Hold* is a story about an elderly couple called Jack and Florence. It takes place when their adult children visit to help sort out their house and their finances. The characters are all played by actors.

To make the production more interesting the stage production team use items called props. These include armchairs, a sofa, and cabinets covered in photographs and trinkets. They are there to help to create an interesting stage set.

The actors often enter and exit from the back of the stage, including via a stair lift that looks like it leads to the upstairs of the house. These exits lead to the backstage area where actors can get changed. The stage and these areas are only for the actors to use.

Special effects are also used to create an interesting production. These may be occasional loud noises and changing lights.

Many people enjoy these effects. Some people like to bring their ear defenders, sunglasses or a favourite smell sprayed on a tissue, to help them manage these moments and enjoy the production more.

The production team like to sometimes include words or phrases that are not true or may seem unkind to one of the other actors. This is to help tell the story and is not real. The actors are pretending.

The people watching the production are called the audience. At the end of the show, the audience will clap to show that they enjoyed the production.

Many people enjoy the production of *To Have and to Hold*.
We hope you do too!

About the show

The play is set in Jack and Florence's house in Wetwang in 2019. They are a married couple in their 90s, with two adult children named Rob and Tina who have moved away from the area. Rob and Tina visit their parents and realise that Jack and Florence need more support. Their cousin Pamela has been bringing round shopping, and a man known as Rhubarb Eddie has been getting them cash and helping with odd jobs.

The stage and set

When you enter the theatre you will see the stage and set. The actors will come out on to the stage to perform. All the items of scenery, furniture and the objects on the stage are called the set.

The set looks like a living room, with a sofa, armchairs, and small table and chairs. There is one door that leads outside to the front of the house, and another door that leads into a kitchen with a hatch that characters sometimes talk through. At the back of the set is a staircase with a stairlift on it.



The Cast



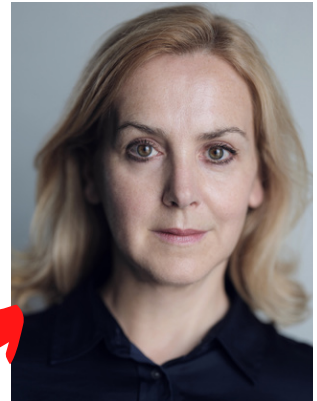
This is Ian Bartholomew,
who plays Jack.



This is Sarah Beharrell,
who plays Pamela.



This is Adrian Hood,
who plays Rhubarb Eddie.



This is Rebecca Johnson,
who plays Tina.



This is Stephen Tompkinson,
who plays Rob.



This is Paula Wilcox,
who plays Florence.



Key Characters



Jack & Florence

A married couple in their 90s. They argue a lot, but love each other. Jack is a retired policeman, with lots of stories to tell. He is not well. Florence is losing her hearing.

Rob

Jack and Florence's son. He writes crime novels and lives in London and LA.



Tina

Jack and Florence's daughter. She lives in Somerset and is the business manager of a private healthcare company.

Pamela

Florence's niece who lives nearby. She brings groceries over to Jack and Florence.



Rhubarb Eddie

A local labourer who grows rhubarb on Jack's allotment, and helps with odd jobs.

The Story



The play starts on a Saturday afternoon in May 2019. The doorbell rings and Rob, Jack and Florence's son, arrives.

They all bicker as Florence makes tea. Rob's cousin Pamela arrives with groceries - she tells Rob that she often drops shopping off for them as he's moved so far away, to London.

Pamela reveals that when Jack and Florence want cash, they give a bank card to "Rhubarb Eddie" who withdraws money for them.

Pamela makes it clear that Rob and his sister aren't doing enough to support their parents. She leaves.

Jack is a retired policeman, and Rob is keen to record all his old stories, to save them for his grandchildren. Jack doesn't want to.

Jack comes downstairs - he's not well and coughs up spit with red spots in. He doesn't want to go to the hospital.



Eddie arrives, bringing rhubarb, and offering to mow the lawn. He hands over £100 in cash that he's withdrawn for Jack. Jack entertains them all with one of his stories.

Tina, Jack and Florence's daughter, arrives. Jack is annoyed that she charges her electric car through the window.

They discuss Jack and Florence moving in with Tina, and their concerns that Eddie might be stealing money from them.



When Jack and Florence return they discuss getting rid of the car.

The family talks about selling the house, and their finances. They log into Jack and Florence's online banking and discover that there is an unexpected direct debit sending money to "Rhubarb Fool Ltd."

The next morning Jack sits with a tape recorder - he is secretly recording all of his old police stories. When Rob enters, he pretends to be listening to music.



Tina tells Jack she's arranged for him to see a private doctor.

Eddie returns, bringing another £100 for Jack, and Tina asks for the receipt. Rob and Tina ask about "Rhubarb Fool Ltd.", accusing Eddie of taking money from their parents. Eddie denies it angrily.

The next day, Monday, Pamela visits, bringing printed bank statements. She's interested in Jack's car and wants to test drive it.

On Tuesday morning Jack, alone again, records another of his old police stories. When the others arrive he switches the cassette over to play music and pretends to be asleep.

Tina has bought Jack some pyjamas for his upcoming hospital visit, as they've found he needs an MRI. Pamela lets them know she's away on holiday with her boyfriend next week.

Jack and Florence share a moment together - despite the bickering they do love each other.





The play jumps to ten months later, during the Covid-19 pandemic. The furniture has now been moved, and Rob and Tina are clearing the house after their parents' deaths.

Rob finds Jack's tapes which he takes to the recycling centre without realising Jack had recorded his stories on them.

Pamela takes the car keys, and Tina and Rob realise that her boyfriend lives in Pocklington and might own "Rhubarb Fool Ltd.".

Eddie arrives, revealing that the tapes Rob has taken to the recycling centre had Jack's stories recorded on them.

Tina and Rob apologise to Eddie for accusing him of stealing Jack and Florence's money. Eddie tells them he saved the tapes and wasn't going to tell them until they apologised.

The three of them listen to a favourite of Jack's stories. As the tape plays, Jack comes onto stage as though telling it in real life.



Lighting, sound effects, and other content

There aren't many loud noises in the show - the doorbell and phone ring a few times, and loud music is played in between scenes. There are no flashing lights or effects and no smoke or haze.

Throughout the show the characters reference death and dying - sometimes jokingly - with Jack aware that he is at the end of his life. There are discussions about hospitals and cancer.

Part of the story involves a concern that Jack and Florence are being taken advantage of and having their money stolen. A direct debit has been set up without their knowledge.

<u>Effect / Content</u>	<u>Approx. Timing</u>
Characters use the words "queer" and "puff" to describe a gay person and Rob corrects this use of language.	27 mins into Act 1.
Jack tells a story from when he was a policeman referencing a murder.	Begins 29 mins into Act 1.
The smoke alarm beeps. It is annoying but not very loud.	36 mins into Act 1.
Jack tells a story from when he was a policeman referencing a murder.	Begins 54 mins into Act 1.
Jack tells a story from when he was a policeman referencing an arson murder.	Begins 2 mins into Act 2.
Jack tells a story from when he was a policeman referencing a suicide by shooting.	Begins 13 mins into Act 2.
The final scene takes place after Jack and Florence's death. Robert and Tina are clearing the house and grieving. It is during the Covid 19 pandemic.	Begins 27 mins into Act 2.

Relaxed Performances

There is a relaxed performance of *To Have and to Hold* on Tuesday 13th May at 7.30pm.

During the relaxed performance the lights inside the theatre will be a bit brighter than usual. We don't mind if you need to get up, move around a little bit or leave the theatre for a break.

There will be a quiet space on the First Floor should you need it.

If you would like to arrange a pre-show visit to the theatre, to familiarise yourself with the space, please contact paul.bennett@hulltruck.co.uk or call 01482 488208.

Sensory Items

We have a small number of ear defenders available to loan (suitable for baby, toddler and adult) which can be useful for patrons with auditory sensitivities.

We also have a small number of wobble cushions and weighted lap blankets available for loan, along with a range of sensory toys.

Please feel free to bring with you any items that usually assist in coping with busy or noisy environments.

We hope that you enjoy the show, and your visit to
Hull Truck Theatre.