

Welcoming you to Hull Truck Theatre!



We're excited to welcome you to our venue on Ferensway very soon. To help you prepare, here's a handy guide to make sure you have a fantastic experience.

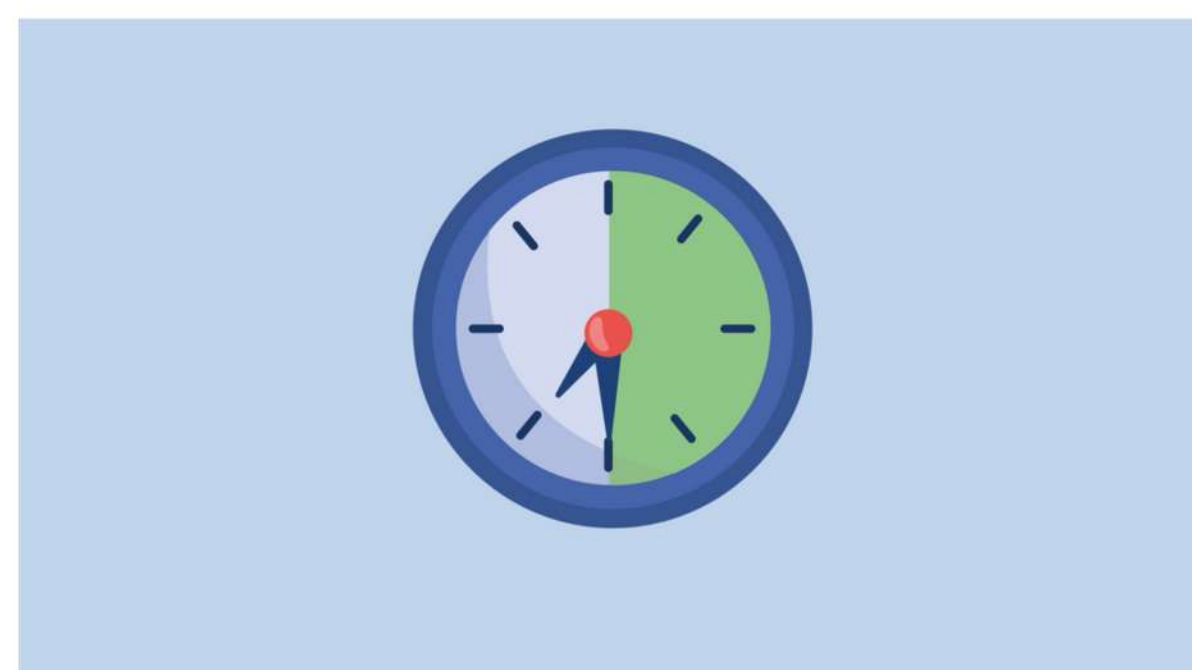
Arriving at the Theatre

Try to arrive about 20-30 minutes before the performance begins.

When you arrive, you'll enter on the ground floor. If you already have your ticket, please have them ready to show the staff before you go to your seats. You might have a paper ticket or e-ticket on your phone.

If you do not have your ticket, please see the Box Office. Your ticket will tell you which auditorium the performance is in.

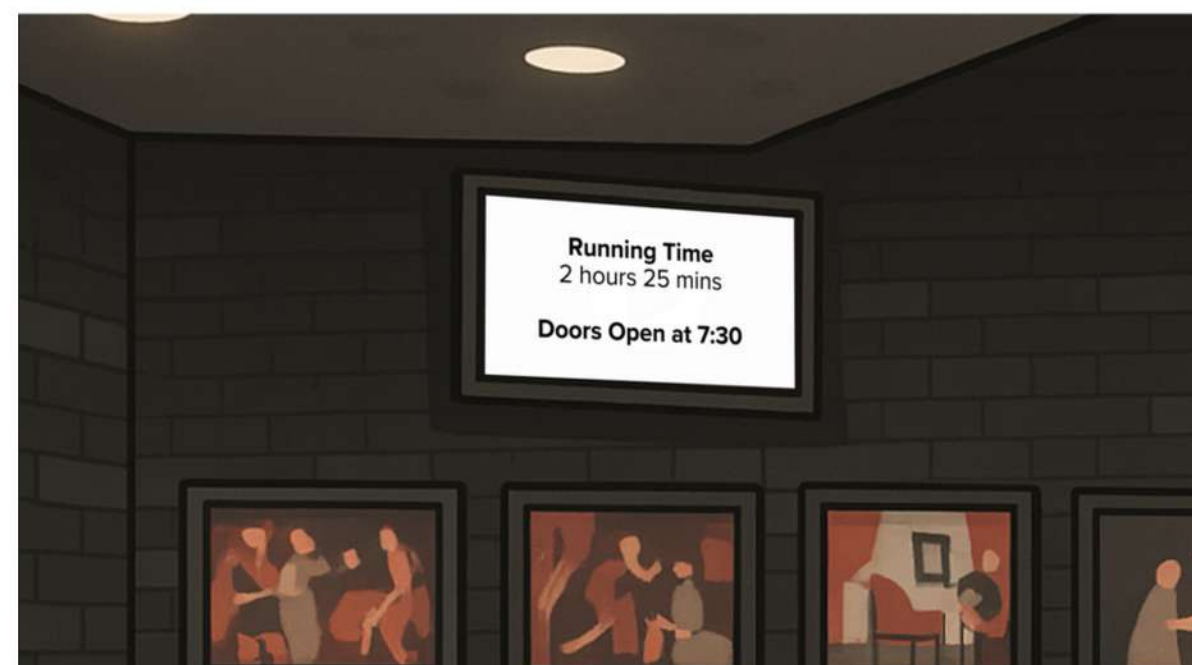
It will either be in the smaller auditorium, which is called the Godber Studio or the larger auditorium, which is called Stage 1. Look for the signs above the entrances on the ground floor.



Welcoming you to Hull Truck Theatre!



The tv screens on the ground floor usually display the length of the show including when the auditorium doors open.



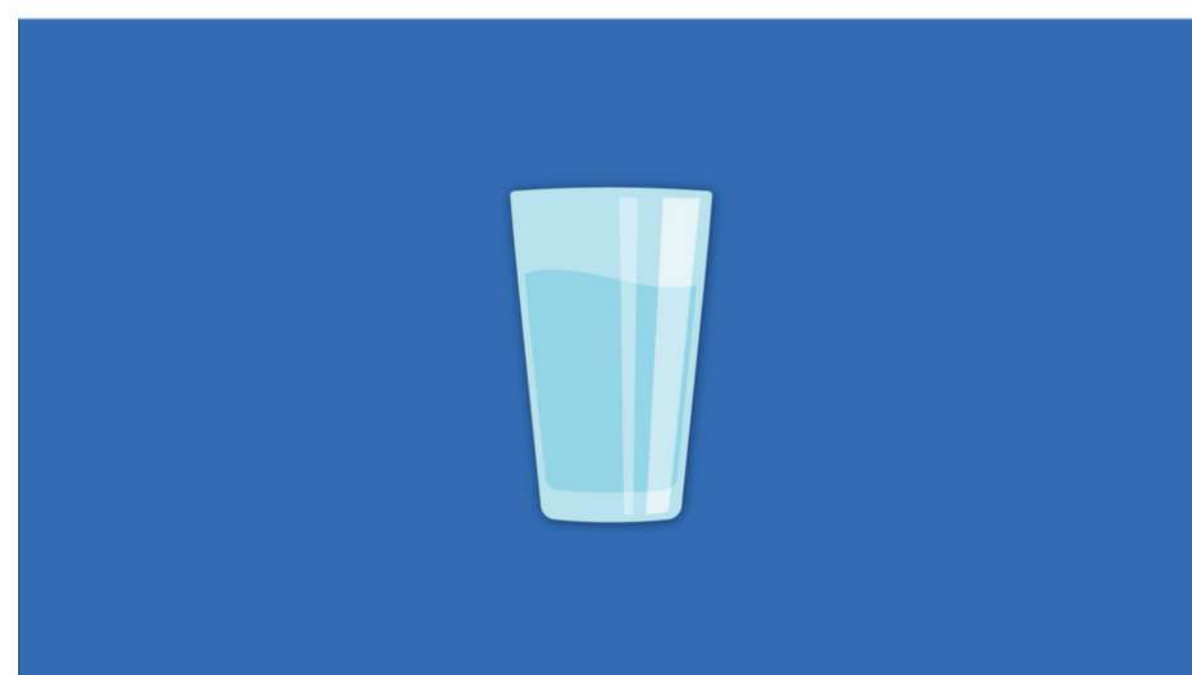
If the doors aren't open yet, feel free to take a seat and relax until they do.



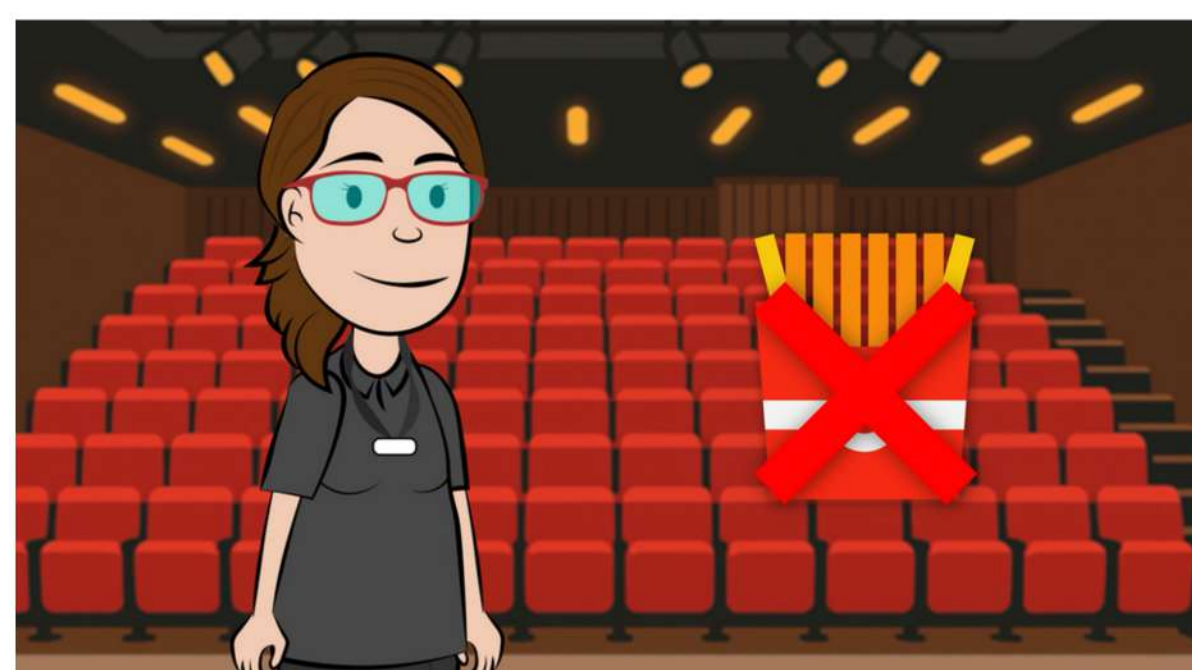
You can also buy drinks and snacks at the bar while you wait, or if you just fancy a tap water, ask at the bar and they will provide one for you.



Alternatively there is a drinks fountain on the ground floor next to the bar that you can use.



Hot food, takeaway or packed lunches are not allowed in the theatre as it can smell and make a mess. However, if you're on a budget, you can bring some 'quiet' snacks of your own, to enjoy during the show.

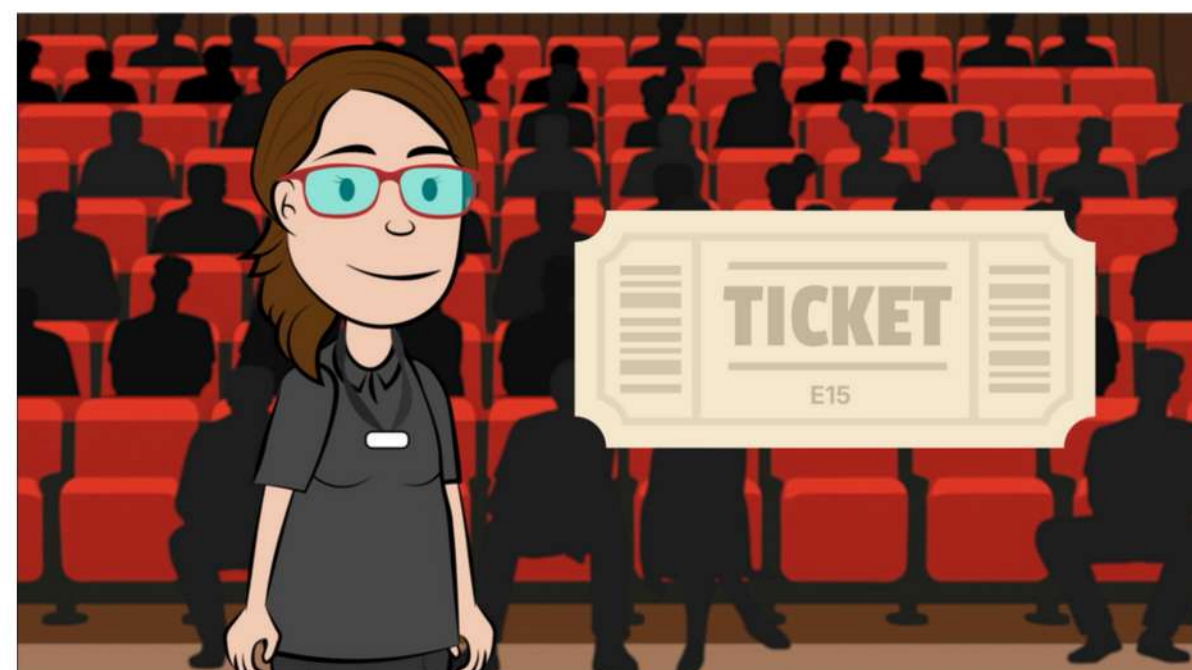


Welcoming you to Hull Truck Theatre!



Finding Your Seat

When the auditorium doors open, our friendly ushers will scan your ticket and direct you to your seat.



Your ticket shows your row (letter) and seat number.



Once in your seat, you'll likely stay there until the interval or the end of the show, so make yourself comfortable!

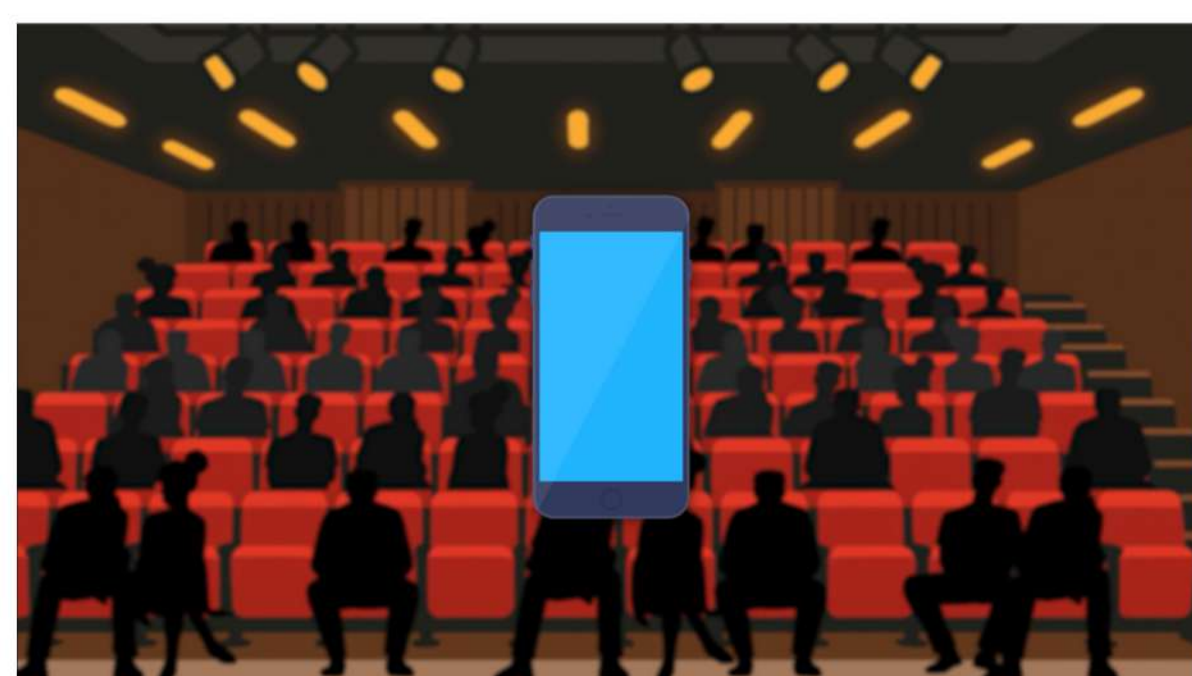


If you do need to take a toilet break during the show, please quietly go to the end of your row and an usher will show you where to go.



During the Show

Before the performance begins, please remember to turn off your phone or put it on silent.



Welcoming you to Hull Truck Theatre!



We would hate for anyone (other audience members and performers) to be distracted by a phone light or sound during the show – even if it's just looking at a text.



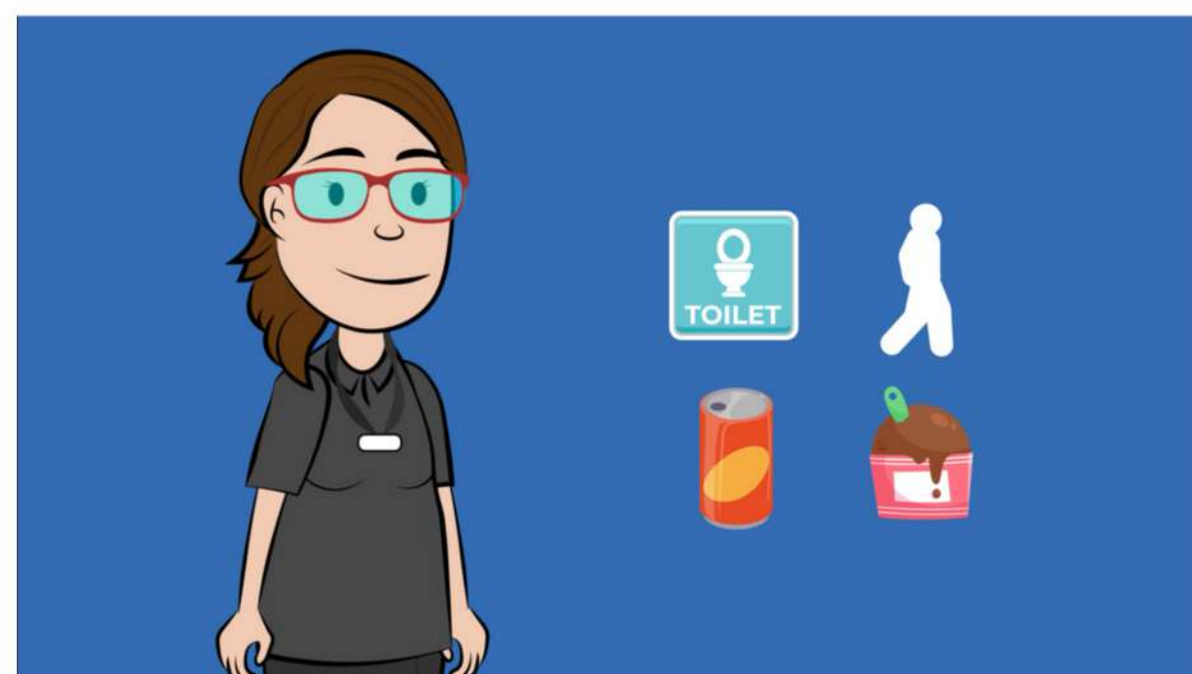
Please also be mindful of noise; keep chatting to a minimum and avoid loud sounds from drinks or sweet wrappers.



The Interval

If there's an interval, it's a great opportunity to:

- Go to the toilet
- Stretch your legs
- Buy a drink or ice cream



Prefer to stay seated? That's fine too!



The interval is usually around 15-20 minutes long. You will hear a call to let you know when the show is about to restart, and you will be asked to take your seats. Do listen out for it.



Welcoming you to Hull Truck Theatre!



After the Show

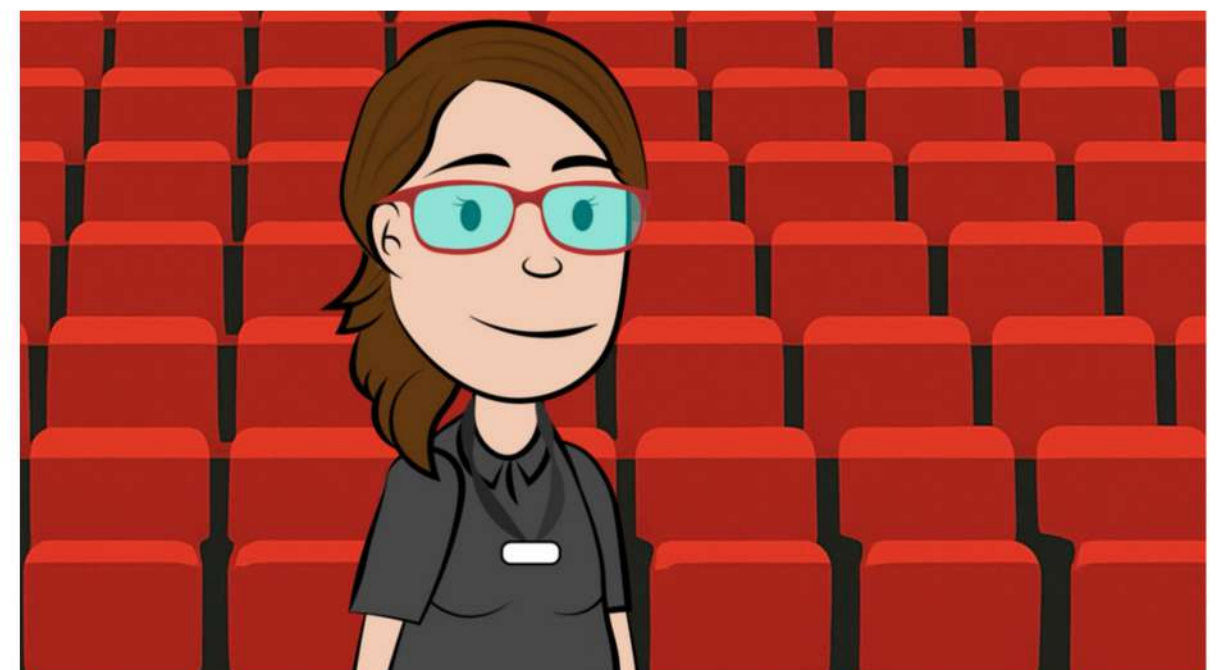
You will know when the show has finished when the house lights get slightly brighter and the actors take a bow on the stage.



Everyone will clap which is a way of saying well done to those on and off the stage that have made the show happen. Feel free to join in if you want to.



Once the actors have left the stage and people move from their seats, you can then leave the auditorium.



Please pick up your rubbish and put it in the bin bags held by the ushers on your way out.



Welcoming you to Hull Truck Theatre!



You may be asked for some feedback about your experience after the show, please feel free to be honest and open. We hope you enjoy your visit and look forward to seeing you again soon.



For more information visit
hulltruck.co.uk

HULL TRUCK THEATRE GRATEFULLY ACKNOWLEDGES SUPPORT FROM:



Supported using public funding by
ARTS COUNCIL
ENGLAND



Hull
City Council

Theatre Words (Glossary)



Auditorium – Performance space (Godber Studio & Stage 1)

Box Office – Where you collect or book tickets. You can also speak to the staff here if you have any questions about the theatre or show.

House Lights – The bright lights above the audience in the auditorium

Interval – Break

Usher – The people who check your tickets and show you where to sit. They can also help you if you have any questions about the theatre or show.